



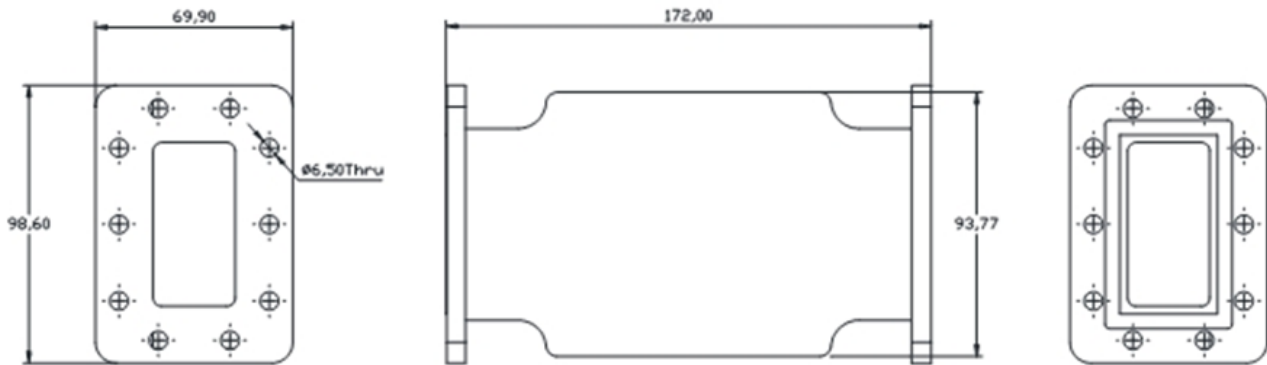
Model Number:
F-WGC1-714085

RF Components

C-Band Waveguide Filter

3820-4200MHz

Physical Dimensions ($\pm 0.3\text{mm}$)



Filter

RF Parameters	
F-WGC1-714085	CGCF
Band Pass Frequencies	3820-4200MHz
Rejection	$\geq 70\text{dB} < 3720\text{MHz}$ $\geq 60\text{dB} @ 3720-3800\text{MHz}$ $\geq 30\text{dB} @ 3800-3805\text{MHz}$ $\geq 25\text{dB} > 4230\text{MHz}$
Insertion Loss (dB)	Max $\leq 1.3 @ 3820-3840\text{MHz}$ $\leq 0.6 @ 3840-4200\text{MHz}$
Return Loss	Min 18dB
Connectors	CPR229F/ CPR229G
Group delay variation ± 0.5 MHz from any frequency within PassBand	2nSec Max@3820-3830M

Environmental	
Operating Temperature	-20 °C to +50°C
Location	For Indoor or Outdoor use
IP Rating	IP66
Power Handling	50W

Broadcast



Marine Oil & Gas



SNG & VSAT



Satellite Teleport

